



SKETCHO

BIM - BUREAU

Your BIM partner for all your architectural, structural and MEPF modelling needs under one roof

COMPANY PROFILE



INDEX

- 04** DESCRIPTION OF COMPANY
- 05** OUR CORPORATE VALUES
- 06** NOTE FROM OUR FOUNDER
- 07** BRIEF OVERVIEW OF HISTORY AND GROWTH
- 08** PRODUCTS AND SERVICES
- 12** ARCHITECTURAL DRAWINGS
- 14** STRUCTURAL DRAWINGS
- 16** MEP INSTALLATION DRAWINGS
- 18** REVIT FAMILY CREATION
- 20** SUCCESSFUL PARTNERSHIPS
- 25** PROJECTS PORTFOLIO
- 30** OUR COMMITMENT TO OUR CLIENTS
- 32** OTHER PROJECTS

DESCRIPTION OF SKETCHO

Your BIM partner for all your architectural, structural, and MEPF (Mechanical, Electrical, plumbing and Firefighting) modelling needs under one roof.

MISSION STATEMENT

“At Sketcho, we offer best in class and cost-effective BIM solutions across a wide range of industries to empower our international and local clients from architects, engineers to construction firms to design and build better and more effectively, achieving their project milestones across the value chain with a peace of mind.”

VISION STATEMENT

“The future of BIM is all about enhancing collaboration and connectivity in the workflow process. As such, Sketcho aspires to be a leading BIM solutions provider committed to not only leveraging but spearheading innovative and advanced building management technologies to achieve the highest quality and most accurate solutions and project results for our partners at every stage of the value chain.”

OUR CORPORATE VALUES

At Sketcho, our corporate values guide all that we do – from how our internal team works with each other, to our relationships with our valued customers and partners.

RESPECT

We believe in the importance of respecting every individual we come across in our work with dignity and a professional attitude. Regardless of circumstance, we strive to accord the same level of care, recognition and attention to opinions, feelings, and culture that may differ from our own.

TAKING OWNERSHIP

At Sketcho, we believe in taking initiative in our work, and caring about the outcome as though we are the owner of the project. We are fully invested in the work that we do and that is why we will strive to deliver work that meets up to our high standards of quality each and every time.

INTEGRITY

We believe that integrity is the foundation upon which trusted relationships can be built with our employees as well as partners and clients. That is why we are fully committed to behave in an honest, trustworthy, and transparent manner that allows us to be always accountable to our stakeholders, whether anyone is checking or not.

QUALITY

We take pride in delivering high quality work that we are proud to put our name on – no matter the size of the project.

Most importantly, we are never content to rest on our laurels - aiming to exceed the highest standard of quality in the most efficient manner.

ADAPTABILITY

Change is the only constant, in life and particularly so in the building and construction industry. That is why at Sketcho, we are always ready and willing to embrace the next wave of changes and challenges that come our way.

ENVIRONMENTAL SUSTAINABILITY

At Sketcho, we define environmental sustainability to be actions that minimizes the impact to the environment for future generations. We do our part by actively identifying and adapting processes within our organization and with partners to consciously minimize our environmental footprint as much as possible.

NOTE FROM FOUNDER

A letter from our founder



“Having spent more than 10 years in the AEC industry, and experiencing the challenges of project delays, overrun costs and collaboration issues first-hand, I decided to take a stand and make a change. Back in 2017, Sketcho was born out of the need for innovative technology to solve the various problems that the AEC industry has been plagued with.

Since then, my team and I have been committed to uphold this dedication to companies plug the gap through our BIM services and solutions. With our strong focus on lean management principles, and customer-centric service, we have made huge strides in making projects a lot more efficient-both time and cost wise for our customers.

Looking back, the past 5 years have been a period of tremendous growth, learning and constant improvements. I am thankful to the partners and clients who have been a part of our growth journey, and I am excited for the many new opportunities between Sketcho and new clients in the coming years!”

Eng. Nevon Jameel
Founder & CEO of Sketcho



Project: Valkstraat, Zaandam



BRIEF OVERVIEW OF HISTORY AND GROWTH



OUR HISTORY

Celebrating momentous milestones (big and small) that made us who we are today.

2017

Sketcho was born out of our Founder, Nevon Jameel's desire to make a change in the AEC industry.



2019

Demand for residential and commercial projects were overwhelming and we cross the target of 50 projects for the year.

2020

To meet increasing demand, the Sketcho team has grown from a one-man shop to a team of 8 professional with a wide range of specialties.



2021

Sketcho expanded the services to the international market – taking on projects from United States, Canada and many more.

PRODUCTS AND SERVICES



Architectural Drawings

Sketcho's trained architects BIM-modellers and drafters are here to help you translate your vision into detailed 2D or 3D architectural drawings and models to impress your clients.



Structural Drawings

Our team of structural engineers is on standby to help you review, provide advice, and come up with a structurally sound plan adhering to all necessary codes and regulations for your project.



MEP Engineering & Installation Drawings

Our MEP team will work closely with you and your installer to develop detailed plans that include precise positioning and easily understood information so that MEP installations are a breeze.



BIM Content Creation

Getting started on BIM modelling? Do you need BIM-content for your product? Our trained BIM experts are ready to create your customized Revit Families, setting parameters, and more.

In need of other solutions? Check out our non-exhaustive list of other solutions that we provide for our AEC clients too:

- Pre-fabrication drawings
- Amending existing building models or drawings
- Converting physical drawings or sketches to digital versions
- Helping to translate 2D drawings to 3D models
- Creating digital twin based on-site survey or 3D-scans
- Deriving accurate Bill of Quantities (BOQ) and Bill of Materials (BOM)
- Process automation
- Visual rendering of exterior and interiors
- And many more

Don't see a solution that suits your needs? Reach out to us for custom solutions

YOUR DEDICATED BIM EXPERT

Don't have an in-house BIM expert? Don't have enough experts to support the growing demand with you BIM-projects?

That's not a problem! Now you have Sketcho as your dedicated BIM expert (certified in Autodesk Revit) to plug the gaps in your projects!



WHY CHOOSE SKETCHO?

Want a trusted BIM partner that you can rely on? Here are a few of many reasons why we are many of our clients preferred BIM agency:

1. BIMExperts–Our extensive architectural, MEP, and construction expertise with both local and international projects has served our clients well.
2. Quality of Work – We take pride in the high standards of our work and seek to exceed expectations every time.
3. Open and Transparent – Our pricing models are flexible and transparent, so you don't have to worry about hidden costs.



CONNECT WITH US TODAY

Have a project you need a hand with? Let Sketcho help you turn your vision into reality today!



Let us collaborate te get your next project done.

ARCHITECTURAL DRAWINGS

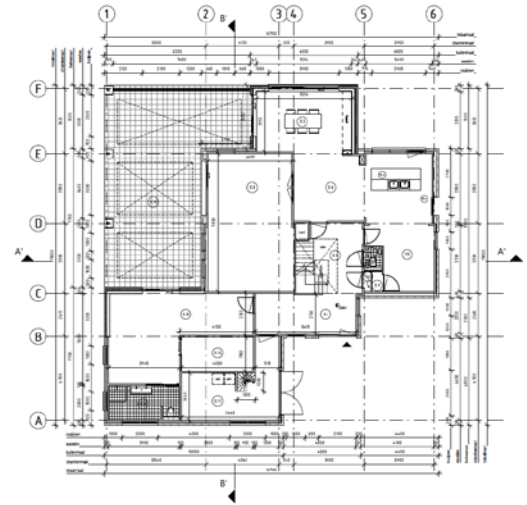


Whether you are building a simple structure, a residential home, or a full-fledged commercial building, architectural drawings are where you begin.

Need to convey your design ideas accurately to impress and convince your clients?

Want a visual of how your design vision will translate into an actual building? Keen to ensure that your design is compliant with relevant building codes and regulations?

That's where a detailed architectural drawing will come in handy!



STRUCTURAL DRAWINGS

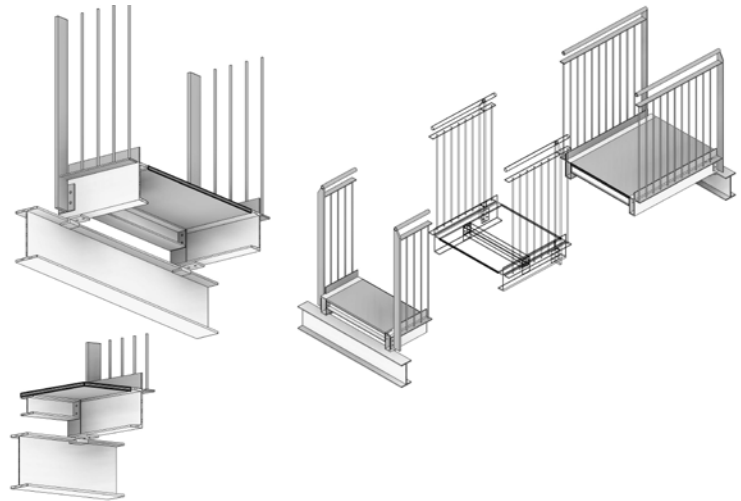


For every beautiful and interesting architectural structure, there has to be a corresponding well thought out structural design that holds it all together.

Need to ensure that the proposed design has structural integrity and has accounted for all aspects?

Want details of the stability and strength of the various built structures from the allowable soil pressure for specific structures to reinforcement requirements? Planning for a technical drawing for technical workers on-site to work off?

That is where structural drawings work their magic!



HOW WE CAN HELP AT SKETCHO

At Sketcho, we understand that the structural integrity of the building is as important as the aesthetics.

And that is why we offer a full suite of services to suit your range of structural drawing requirements:

- Struggling to adhere to confusing building codes and regulations? Why not tap on the vast expertise of our team of structural engineers to review, advise and come up with a structural building taking into consideration all the required technical and regulatory requirements.
- Require structural modelling or drafting services? Don't worry. Rely on our expert team of highly experienced engineers BIM-modellers en drafters to help you analyse load-bearing requirements, structural column designs, materials and translate them into easily understood BIM-model and detailed drawings.



OUTSOURCE YOUR STRUCTURAL DRAWINGS TO SKETCHO TODAY

Regardless of size or intended purpose, what stage of development your project is at (from LOD 100 to 500), and the type of construction project that you are undertaking, our team of experienced engineers & BIM-modellers at Sketcho are here to lend a helping hand.

Don't hesitate. Reach out to us with your requirements and let us come back to you with a detailed proposal of how we can help!

MEP INSTALLATION DRAWINGS



Efficient and good buildings cannot function well without the right MEP design.

Planning out air ducts, electrical system, sanitary piping, to firefighting system from scratch? Doing a major renovation that requires an overhaul of existing installations?

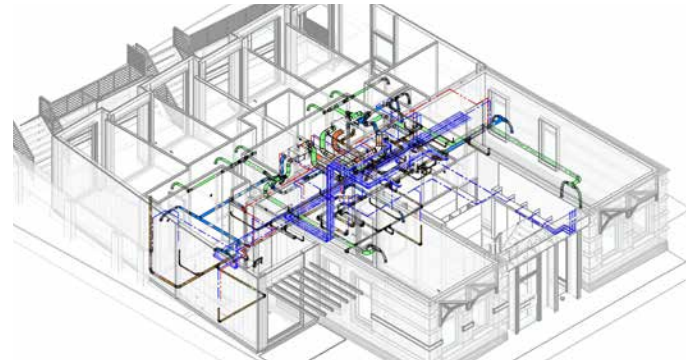
Whatever your type of project, installation drawings are essential to give a clear and complete picture of what requires to be built.

Wondering how a good MEP installation drawing can help your project? Here are a few benefits:

- Ensure that your design is adhered to – with straightforward and precise drawings for supports and fixings, information from shop drawings, etc.
- Keep your budget on track – without any major last-minute

changes due to discrepancies on-site versus the instructions.

- Facilitate communication between different team members, no contradictory or duplicated content that can cause confusion.



HOW WE CAN HELP AT SKETCHO

At Sketcho, we believe that the construction of a building requires the utmost precision – and that includes everything on the inside as well.

And that is why we offer a full suite of services to suit your range of MEP installation drawing requirements:

- Having problems visualizing how your air ducts, sanitary piping, or electrical systems can be built out? Leave it to our experienced team of BIM experts to build out a clear and accurate model of the systems based on your building requirements.
- Not sure how to communicate your needs to your MEP contractor? Sketcho can work with you hand in hand, to develop detailed plans

that include precise positioning, carefully presented information on instructions for the installers, and more.

DEVELOP EASILY UNDERSTOOD INSTALLATION DRAWINGS WITH SKETCHO TODAY

Want to have peace of mind with your MEP installation works? Start with well-modelled and precise installation drawings that can be understood by anyone!

Reach out to us with your requirements and let us come back to you with a detailed proposal of how we can collaborate with you to develop them for your unique project!



REVIT FAMILY CREATION

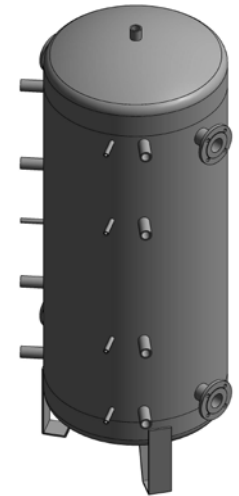


Looking to build BIM content to help provide clearer insight in planning, designing, and construction of your projects going forward? Have special requirements, unique fixtures, or characteristic fittings? Do you need a Revit content for your product?

If so, creating customized Revit Families is your starting point.

Imagine the whole range of various architectural, structural, mechanical, electrical, and even decorative components – from windows, doors, columns, and more – that you can easily put together to visualise how everything fits into your project’s digital twin.

Once you have that, you can be assured that your model has the accuracy and flexibility that come with specific dimensions and easily adjustable parameters that can be updated throughout your project for easy modification and multiple types.



HOW WE CAN HELP AT SKETCHO

As pioneers in the field of BIM modelling, at Sketcho we understand that one of the most complicated parts of BIM modelling is the step of creating Revit components (BIM content).

And that is why we want to help AEC professionals like yourself by offering our expertise in this area:

- Want to build your Revit content but don't know where to start? Let our trained BIM experts help guide you through the steps of Architectural, Structural, Mechanical, Electrical, Decorative Revit Family and all other type of family creation, setting up parametric families, building systems and components, and more.
- Need to amend your BIM model but don't have an in-house BIM-trained staff? Tap on our team of Revit experts who can help you in any

BIM-related task from embedding BIM objects with metadata to make it search-friendly to helping you reuse or update family components from prior projects.

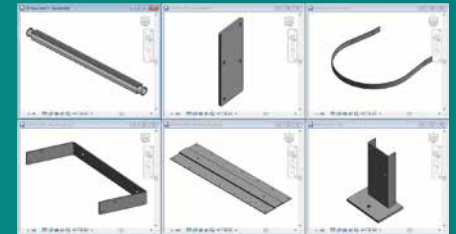


IMPROVE YOUR DESIGN WITH CUSTOMIZED REVIT FAMILIES TODAY

Want to save time and effort, while maintaining high levels of accuracy and flexibility in your design?

Well, BIM modelling with customized Revit families is your solution!

Not sure how to get started? Don't worry, simply reach out to our friendly team with your requirements and let us come back with a proposal way to get you on board with the future of architectural and MEP modelling!



SUCCESSFUL PARTNERSHIPS



TERBERG TOTAALINSTALLATIE BV
INSTALLATION FIRM

For an installation firm like Terberg Totaalinstallatie BV that offers a wide range of installation solutions ranging from HVAC, plumbing, electrical, security, fire protection to data infrastructures, accurate and detailed installation drawings are critical.

As such, they require a reliable partner like Sketcho to provide them with precise modelling visualizations of their systems and clear drawings and instructions for their construction needs.

From an initial project of MEP modelling for 5 apartments to the latest project of a mixed-use residential and commercial building of more than 400 apartments, Sketcho is ever ready to support our clients with increasing project workloads.

“Sketcho delivers high-quality modelling services on time in full, with great communication so that all parties are kept up to date on the development of the project.”

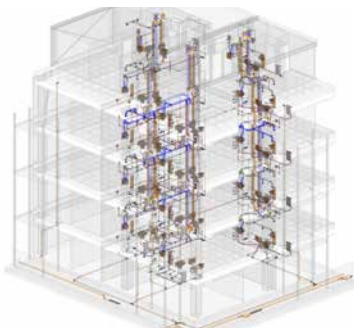




KUDO INSTALLATIETECHNIEK B.V. CONSTRUCTION FIRM

As a growing construction firm that develops as well as build more than 300 home annually, Kudo installatietechnik b.v is in need of a partner that can support their scale and growth.

That was when Sketcho was roped into a project to help provide an MP BIM model for a challenging project which required the transformation of an office building into a residential complex with 194 apartments.



“Sketcho is very flexible in their delivery through all project phases and can switch quickly between the diversity of the tasks allowing us to keep the project running on schedule”





ENGIE INSTALLATIE NOORD

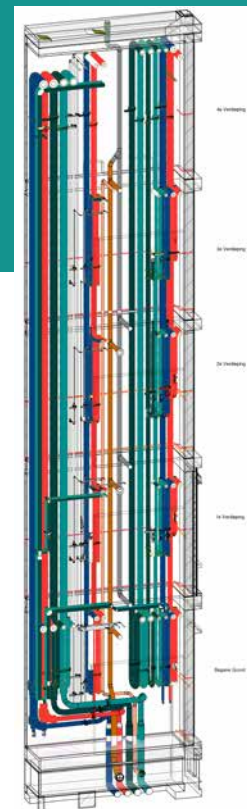
INTERNATIONAL SERVICES AND ENERGY COMPANY

As a market leader in technical services, innovative technical solutions, and sustainable development, Engie Installatie Noord is always on the lookout for partners who can help them in their journey with their sustainable projects throughout the Netherlands.

In one of their ambitious projects in building the first all-electric hospital in the Netherlands, Sketcho joined the team to help make this a reality. Working with the design teams in modelling, coordinating, and producing the technical and execution drawings (HVAC discipline) for all the technical and medical gas installation systems in the hospital complex.



“We are satisfied with the services and support provided by the Sketcho team. We will definitely keep them in mind for future cooperation.”

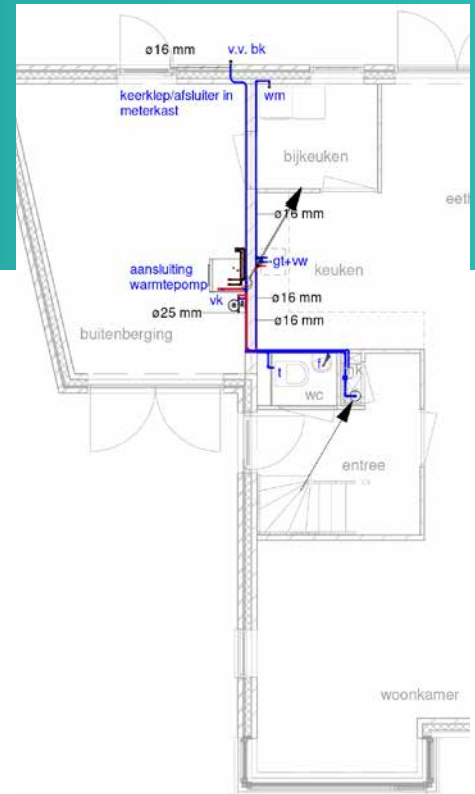
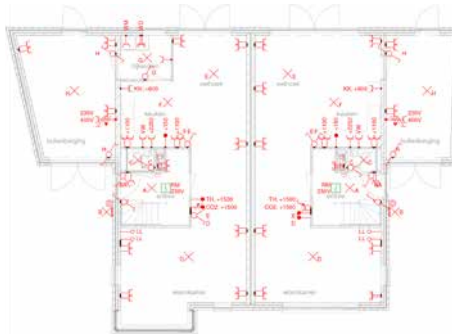




MORRENHOF-JANSEN INSTALLATIEBEDRIJVEN

ALL MEP SERVICES EN CONSTRUCTION

As a comprehensive installation firm offering installation services from electrical installations, water and sanitation, climate control, air treatment, energy, and even security, Morrenhof-Jansen Installatiebedrijven is always on the lookout for partners who can support them across their disciplines. At Sketcho, our team is well trained in MEP installation drawings of all disciplines, making us the perfect match for the project they engaged us for. MEP modelling and drawing services that required a wide range of installations for a pair of twin houses.



“With the first draft delivery, the drawings do not come as we make internally. We passed on our comments to the Sketcho team and they just did the job according to our standards”



BOUWBURO ROODHART

HOME DESIGN, RENOVATION AND CONSTRUCTION FIRM

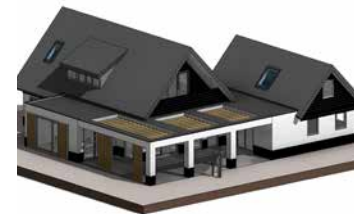
As an end-to-end full-service home design, renovation, and construction firm, Bouwbuuro Roodhart inevitably requires a dependable partner like Sketcho to assist in their workflow.

From developing engineering and architecture drawings for their wide portfolio of projects (including building new homes from scratch, industrial buildings, city centre plans, and many more), to providing design advisory, Sketcho has been a supportive BIM partner throughout Bouwbuuro-Roodhart's years of growth.

Having worked closely with Bouwbuuro's team for more than 5 years and on over 60 successful projects, Sketcho is proud to have a long-term partner like them.



"BOUWBURO red heart has been working on various projects together with the Sketcho team for more than 5 years. Nevon and his colleagues are always ready to meet our high demands and wishes while always meeting the schedule. As BOUWBURO red-heart, we are therefore very pleased with our collaboration and look forward to a bright future".



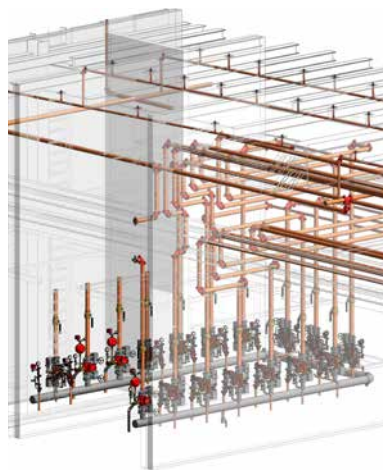


TRIGION BRANDVEILIGHEID BV SECURITY SERVICE FIRM (FACILITY MANAGEMENT)

Part of the large Facilicom Group conglomerate, Trigion is a company under their facilities management division focusing on providing full-service security solutions for a variety of industries including building security.

Sketcho was approached by Trigion to support their BIM modelling requirements for a sprinkler system installation project for a Microsoft data centre based in Amsterdam. Based on initial design concepts, Sketcho helped to model and generate accurate firefighting systems drawings to allow for prefabrication of the main- & subnet and subsequent installation separately on-site.

“Great work by the Sketcho team! Appreciate their precise and quality work that enabled us to keep the project on schedule.”



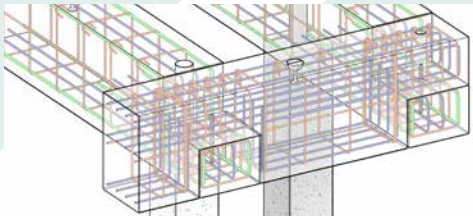


R. BOOM CONSTRUCTIEADVIES BOUTIQUE CONSTRUCTION FIRM

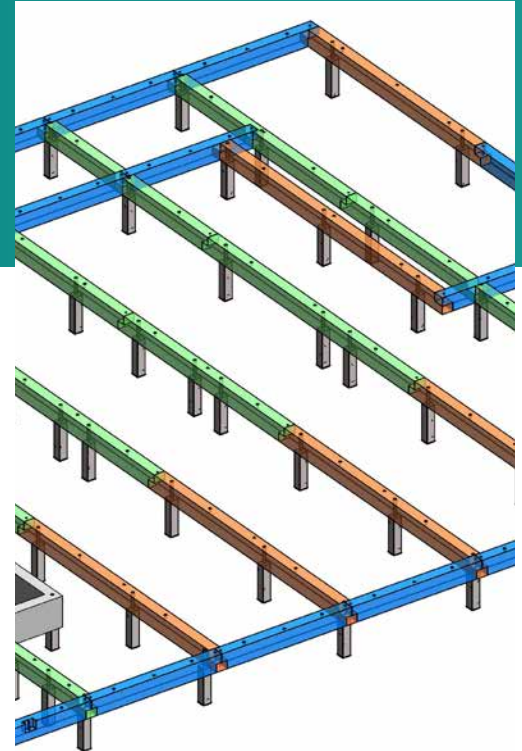
R.Boom Constructieadvies is a boutique construction firm that focuses on providing niche services like building load calculations and structural planning for building structures.

Given their specialized area of expertise, they are particularly in need of skilled partners who are able to collaborate with them on projects.

On one of their projects involving a 130 room beachside hotel, Sketcho was engaged to help provide BIM-modelling services as well as detailed rebar drawings for the hotel's prefabricated foundation.



"The work done by Sketcho was highly commendable! Their detailed drawings were key to ensuring our seamless construction process."



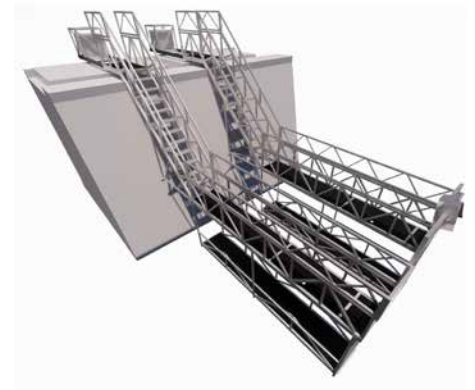
EUROSCAFFOLD SCAFFOLDING MANUFACTURER AND SUPPLIER

As a leading manufacturer and supplier of professional scaffolding for indoor and outdoor use, Eurosccaffold has its unique needs for BIM modelling and technical drawing works. And that's where Sketcho comes in handy.

They first approached Sketcho to help them come up with a design for aluminium stairs for a rotating telescope platform for NATO. With the help of creative 3D modelling, Sketcho was able to help prototype and develop a final working version with detailed drawings and instructions for manufacturing and assembly.



"Sketcho was an invaluable team player who brought significant value to the table."



PROJECTS PORTFOLIO

WONDERWOODS

CLIENT: TERBER TOTAALINSTALLATIE

Type: Mixed Use (Commercial and Residential)

Location: Utrecht, The Netherlands

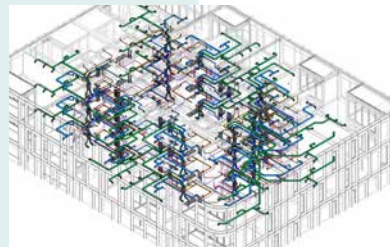
Status: Excution

Client: Terberg Totaalinstallaties

The Wonderwoods project is an iconic mixed-use development in the heart of Utrecht's urban center due to its unique Vertical Forest built into the architecture.

Sketcho was the supporting BIM modelling company in charge of the MEP installations for more than 400 residential apartments of varying types and sizes in the complex and ensuring they adhere to Netherlands building regulations.

Over two years of intense coordination with the project's structural and architectural firms as well as the client, the project was completed to the client's full satisfaction.



LOEVESTEIN 33

CLIENT: KUDO TOTAALINSTALLATIE

Type: Residential

Location: Ede, The Netherlands

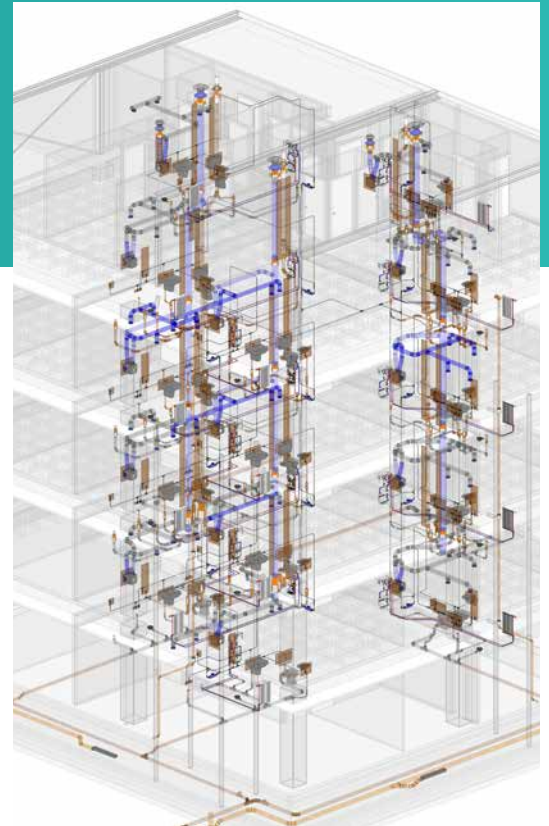
Status: Completed

Clients: Kudo installatietechniek b.v

The Loevestein 33 project involved the challenging transformation of an existing office building into a 194 - apartment residential complex requiring both dismantling and reconstruction for its new purpose. Sketcho was in-charge of the development of the MP (Mechanical and Plumbing) BIM models and documentation for the project. This included ensuring ventilation for each apartment type being designed according to code, ensuring sanitary fixtures are modelled according to architectural requirements, heating

system components among many other tasks.

By ensuring seamless coordination across various disciplines to develop the final model, Sketcho was able to help ensure the project was able to keep on its tight schedule.



KWAKELKADE 23

CLIENT: BOUWBURO ROOD-HART

Type: Mixed use (Commercial and Residential)

Location: Alkmaar, The Netherlands

Status: Conceptual

Clients: Bouwburo Rood-hart

The Kwakelkade project is a mid-rise mixed-used complex with around 20 apartments and commercial use on the ground floor and an underground parking garage.

Sketcho was engaged by BBRH to work hand in hand with the architect and structural engineer to design, model, and develop the architectural drawings for the project.

With Sketcho's insights into building installation, the team was able to take into consideration downstream requirements and factor them into the early architectural drawings ahead of time.



LAKE LAND HOTEL

CLIENT: R. BOOM CONSTRUCTIE ADVIES

Type: Commercial

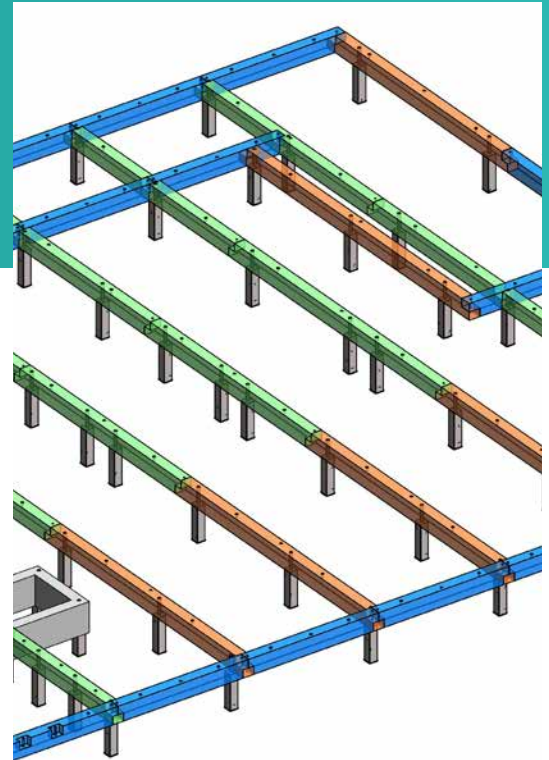
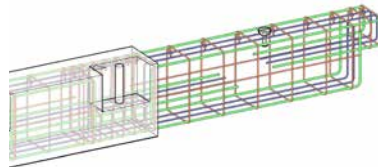
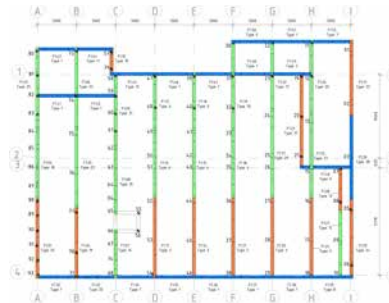
Location: Monnikendam, The Netherlands

Status: Completed

Clients: R. Boom Constructieadvies

The Lake Land Hotel project is a 130 - room beachside hotel near the heart of Monnickendam, and the client, a boutique construction firm that specializes in the calculation of building loads.

Sketcho was tasked by the client to model and deliver detailed rebar drawings for the prefabricated foundation based on their sketches. This included the bill of materials, and even schedules for cutting and bending each foundation beam – all while taking into consideration references for when they are put together on-site.



EDGE 05

CLIENT: TRIGION BRANDVEILIGHEID BV

Type: Utility Building (Data Center)

Location: Amsterdam, The Netherlands

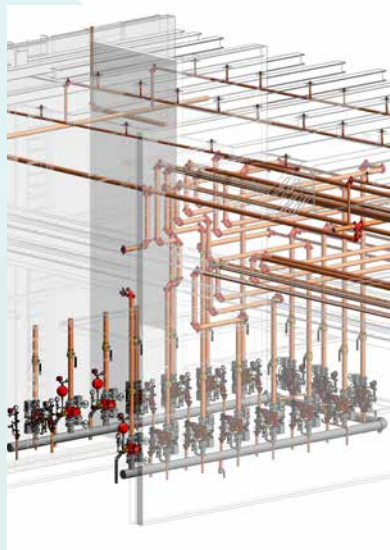
Status: Completed

Clients: Trigion Brandveiligheid BV

The Edge 05 project was about the development of a fire protection system for an existing Microsoft data center located in Amsterdam.

For this project, Sketcho was hired by Trigion (a security and facilities management company) to help provide the necessary conceptual sketches, MEP modelling of the sprinkler and sensor system as well as technical drawings for the prefabrication of the subnets.

While Sketcho was not the only BIM-modelling partner working on the project, we were able to leave a great impression on the client by supporting them with solutions and completing the work precisely and on schedule.



ISALA HOSPITAL

CLIENT: ENGIE TOTAALINSTALLATIE BV

Type: Commercial

Location: Meppel, The Netherlands

Status: Completed

Clients: Engie Totaalinstallaties BV

The Isala Hospital is Netherlands's very first all-electric hospital – an ambitious project by the innovative company Engie Installatie Noord.

Sketcho's role in this landmark building was to provide modelling, coordination, and development of technical and execution drawings for the various heating, ventilation, air conditioning as well as medical gas installations within the building.

This was a particularly challenging task due to the diverse needs of the project, but the Sketcho team stepped up to the challenge and was able to keep pace with the necessary deliverables while assisting other partners to help keep the project on schedule.



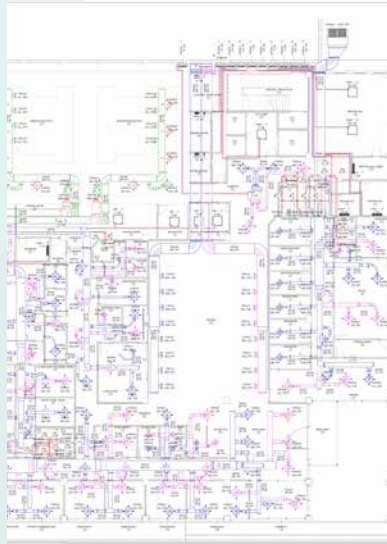
GERMAN ONCOLOGY CENTRE

CLIENT: AT-KOELTECHNIK

Type: Utility Building
Location: Alnajaf, Iraq
Status: Completed
Clients: AT-Koeltechnik

The German Oncology Centre is one of the newest strategic investment projects in Iraq's health sector – established to support the needs of cancer patients through the southern Iraqi governorate.

Sketcho worked hand in hand with the client (AT Koeltechnik) to design the project from the ground up with the BIM methodology. On top of that, Sketcho was also tasked with coming up with the technical drawings with precise installation instructions and bill of quantities and materials for the hospital complex's HVAC and medical gas installations.

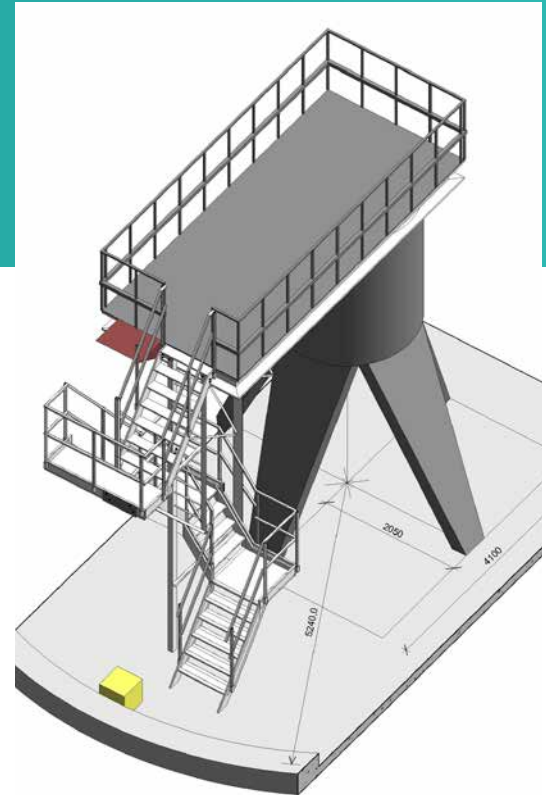
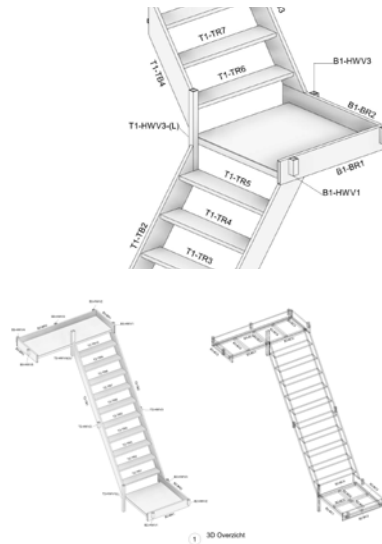


NATO OBSERVATION TELESCOPE

CLIENT: EUROSCAFFOLD

Type: Utility Building
Location: The Hague, The Netherlands
Status: Completed
Clients: Eurosccaffold

The NATO Observation Telescope project was one of the most unique and challenging projects that the Sketcho team has worked on. This involved the designing of aluminum stairs that would be able to be mounted onto a rotating telescope platform. Sketcho worked hand in hand with our client (a leading professional scaffolding manufacturer) and designed iterations of the stairs until it was able to achieve the function that was required. The modelling work and subsequent detailed documentation also helped the team be able to assemble them on-site easily with no issue.



OUR COMMITMENT TO OUR CLIENTS

OUR COMMITMENT TO OUR CLIENTS

Our clients expect and deserve the best. That is why our team at Sketchcho strives to deliver the highest quality and most efficient solutions for our partners to enable them to achieve success for their projects at every stage of the value chain.

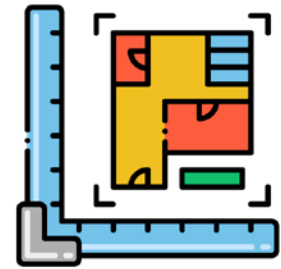
WHY CHOOSE SKETCHO?

ONE-STOP SHOP:

We offer a wide range of services and solutions from architectural drawings, structural drawings, MEP Engineering & Installation drawings to BIM content creation all under one roof for your convenience.

DOMAIN EXPERTISE:

The team at Sketchcho is made up of experienced process engineers who are highly skilled in a wide range of specialties to meet all your project needs no matter how complex it may be.



BEST IN CLASS STANDARDS:

At Sketchcho, we believe in taking ownership in every project that we take on and are fully invested in the work that we do. That is why you can expect high quality work for all your projects.

Sketcho: Your Reliable Partner Always

Starting on a new project? Need a little extra help on your existing projects? Whatever your needs are, let us know how we can be of help.

Reach out to our team to schedule a complimentary project brief meeting to kickstart your project.

ACCOMMODATIVE:

We understand the ever-changing nature of projects in this industry and that is why our team is trained and equipped to accommodate any sudden changes or developments that may crop up during complex projects.



OTHER PROJECTS

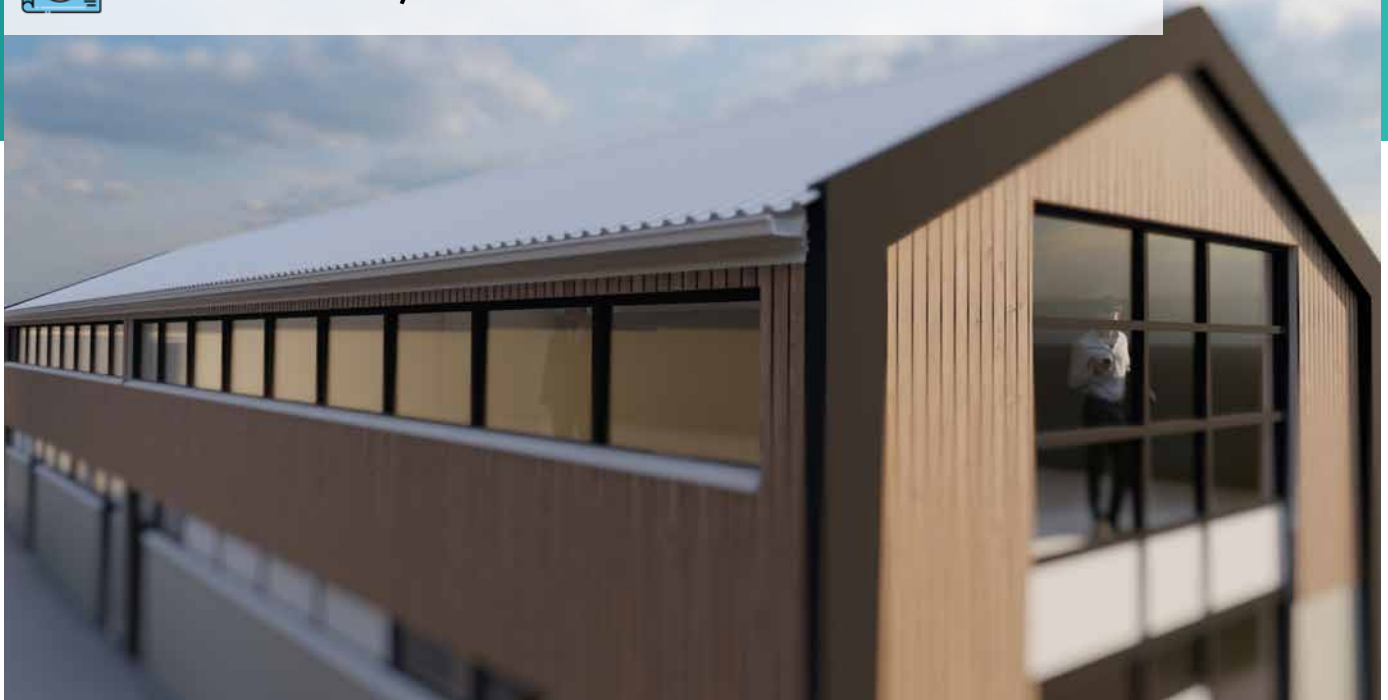


AMBACHTSWEG, OOSTHUIZEN - NL





DE VOLGER, DE RIJP - NL

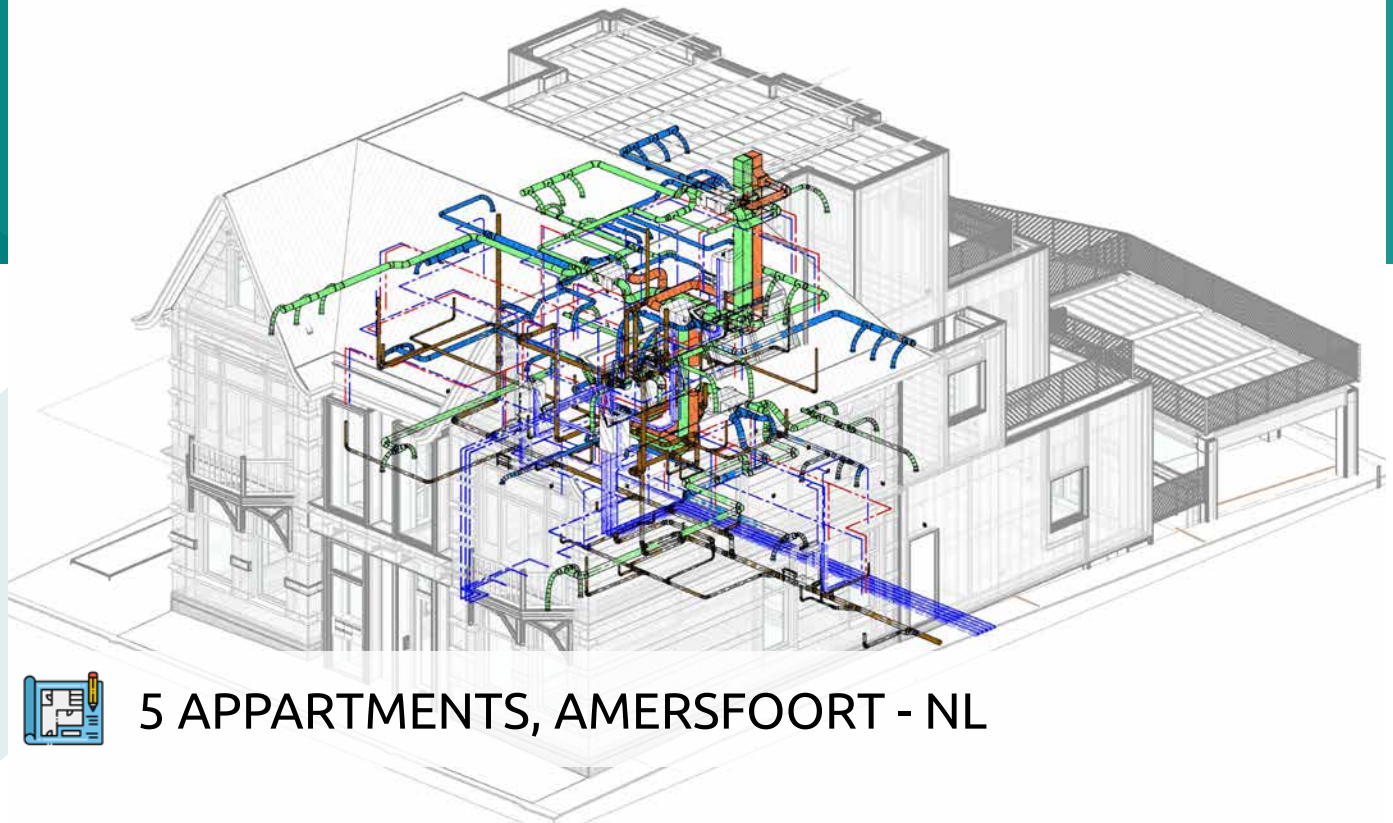




AUTOBEDRIJF PETER-URSEM, PURMEREND - NL



Vinkenhof, Zaandam - NL



5 APPARTMENTS, AMERSFOORT - NL



WATEROEN, BROEK OP LANGEDIJK - NL



DE HOUT, HEM - NL



WUSTELAAN, NOORD-SANTPOORT - NL



Residential Family House, Vermont - USA



GORDINGWEG, ALMERE - NL



DRIEBANWEG, HEM - NL



Residential Building, Ontario - Canada



Hommelend, Monnickendam - NL



CONTACT US

+31 50 50 84 82

info@sketcho.nl

www.sketcho.nl

Stationsplein 99-186
1703WE Heerhugowaard

KvK reg. nr.: 68885164
VAT ID.: 002489494B75

